



BEAUMONT & FLETCHER  
INTERIOR ATELIER

---

COUTURE  
FABRICS

---

---

[www.beaumontandfletcher.com](http://www.beaumontandfletcher.com)

---



BEAUMONT & FLETCHER  
INTERIOR ATELIER

---

A UNIQUE COLLECTION  
OF BEAUTIFUL FABRICS,  
CREATED ENTIRELY  
BY HAND.

---

Seeking out beautiful and rare fabrics was always a labour of love for me. Whether behind glass in museums, in antique textile auctions, or in tiny provincial markets, these discoveries excited and encouraged me to create. From time to time I would come across rare gems; meticulously embroidered fabrics brocaded with extraordinary skill and workmanship. They would date back to the time of the Renaissance, or the Court of Louis XIV, when such textiles were valued as highly as rare jewellery. They inspired me to revive and recreate the skills that made them so unique and prized, instead of adapting these exquisite designs to modern manufacturing processes.

It took several years and a fascinating journey of rediscovery to assemble the necessary skills and I am proud that Beaumont & Fletcher's Couture Collection is now recognised as a collection of unique textiles of extraordinary and unequalled quality. For those who genuinely love and admire beautiful textiles, it represents an opportunity to acquire fabrics that are truly unique. Hand embroidered in fine coloured silk, gold and silver threads, some are embellished with pearls and crystals, some inlaid with semi-precious stones; each is a work of art.

The designs shown here can be interpreted in infinite variety, with custom colours, materials and scale; clients and decorators may commission their own original designs. Our skilled artisans can embroider as beautifully onto satin, or silk velvet, delicate sheer organza, and even on leather panels. Every fabric is bespoke, a unique creation, born of limitless imagination and exquisite workmanship.

John Crowell - The Founder of Beaumont & Fletcher

---

[www.beaumontandfletcher.com](http://www.beaumontandfletcher.com)

---



'I DO NOT KNOW WHAT TO CALL THIS LAND UPON WHICH I STAND. IF WHAT IS BENEATH MY FEET IS PARADISE, THEN WHAT IS THE ALHAMBRA? HEAVEN?'

Lope de Vega



Shown on Capri silk velvet - Blush



Shown on Capri silk velvet - Argent

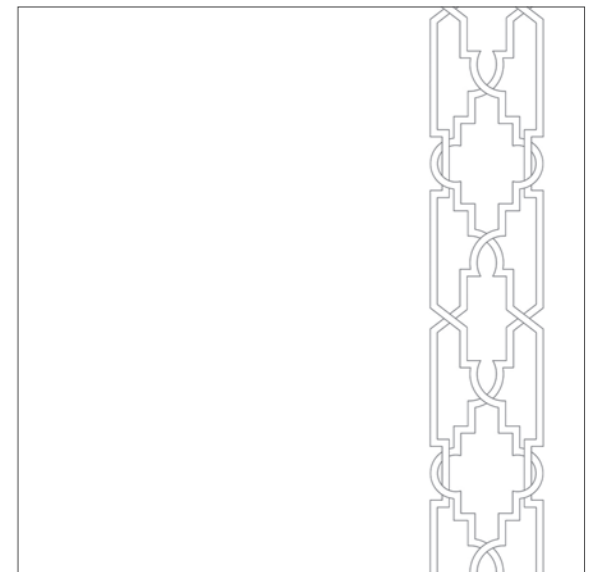
Aida is a simple yet chic and confident leading edge geometric design, inspired by the splendid Moorish decorations of the Alhambra Palace in Granada.

Embroidered width: 19.5cm 7¾"  
 Pattern repeat: 54cm 21¼"

All sizes are approximate and may vary slightly. Available in bespoke sizes, colours and on any background fabric. Please contact us for further assistance.

Scale 1:125

Illustration of a 1m drop of Aida







Shown on Plain satin - Olive



Shown on Plain satin - Olive

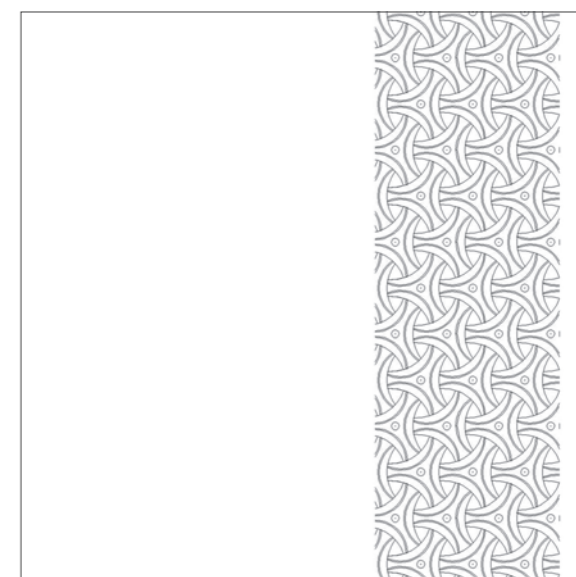
Amadeo is a finely interwoven symmetrical design in delicate chain mail. The endlessly looping and interweaving pattern is inspired by ancient Celtic symbols - yet this wonderfully complex design has a noticeably modern feel.

Embroidered width: 32.5cm 12¾"  
 Pattern repeat: 16cm 6¼"

All sizes are approximate and may vary slightly. Available in bespoke sizes, colours and on any background fabric. Please contact us for further assistance.

Scale 1:125

Illustration of a 1m drop of Amadeo







Shown on Erksay wool - Shell



Shown on Plain silk - Pistachio

Andromeda is a spectacular theatrical design bursting with energy and movement. It is bold and abstract - so vibrant, so dazzling - you can almost hear it!

Embroidered width: 25cm 10"  
 Pattern repeat: 35cm 13¾"

All sizes are approximate and may vary slightly. Available in bespoke sizes, colours and on any background fabric. Please contact us for further assistance.

Scale 1:125

Illustration of a 1m drop of Andromeda





'WHEN DAISIES PIED AND VIOLETS BLUE,  
AND LADY-SMOCKS ALL SILVER WHITE AND  
CUCKOO BUDS OF YELLOW HUE DO THE  
PAINT THE MEADOWS WITH DELIGHT.'

Love's Labour's Lost



Shown on Lagan silk - Ivory



Shown on Plain silk - Light green

Artemis is an exquisite example of the skill and workmanship required for this flawless delicate pattern. A tracery of fragile intertwining stems and complex jewel-like flowers.

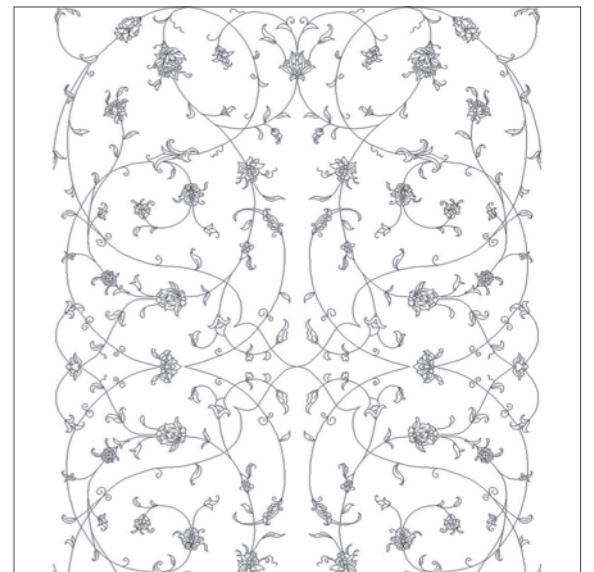
Embroidered width: 86cm 33¾"  
Pattern repeat: 128.5cm 50½"

All sizes are approximate and may vary slightly.  
Available in bespoke sizes, colours and on any background fabric.

Please contact us for further assistance.

Scale 1:125

Illustration of a 1m drop of Artemis





'MODERNISM  
RELEASED US FROM  
THE CONSTRAINTS OF  
EVERYTHING THAT HAD  
GONE BEFORE WITH A  
EUPHORIC SENSE OF  
FREEDOM.'

Arthur Erickson

Shown on Eriskay wool - Shell with Capri - Glacier applique



Audrey cushion shown on Lagan silk - Oyster with Capri - Sable applique

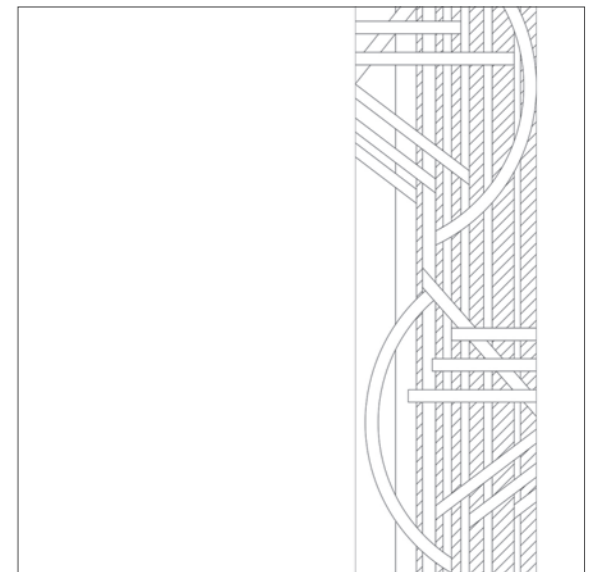
Audrey is inspired by our love of Modernism - it is a striking piece, clean, sharp and linear in feel - a true homage for our love of the abstract and the 'new world' whilst retaining the traditional skilled handwork of applied fabric with intricate beading.

Embroidered width: 32cm 12½"  
Pattern repeat: 120cm 47¼"

All sizes are approximate and may vary slightly.  
Available in bespoke sizes, colours and on any background fabric.  
Please contact us for further assistance.

Scale 1:125

Illustration of a 1m drop of Audrey





'STYLE IS MUCH MORE INTERESTING THAN FASHION.'

Marc Jacobs



Shown on Capri silk velvet - Stone



Shown on Capri silk velvet - Mistletoe

Augusta is a delicate tracery of finely handstitched silver threads and crystals that entwine the leading edge of this fabric with an ethereal “fernlike” pattern.

Embroidered width: 25cm 9¾”  
 Pattern repeat: 44.5cm 17½”

All sizes are approximate and may vary slightly. Available in bespoke sizes, colours and on any background fabric. Please contact us for further assistance.

Scale 1:125

Illustration of a 1m drop of Augusta







Shown on Empire tafetta Storm



Boccaccio cushion shown on Capri silk velvet - Almond

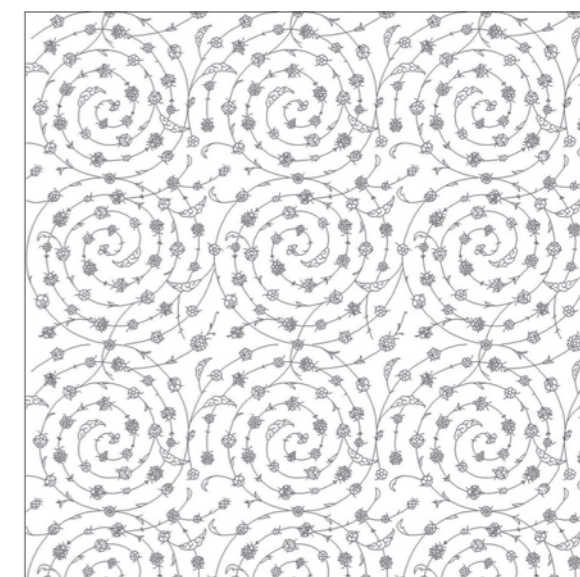
Boccaccio is an intricate swirling floral pattern in gold and silver thread inspired by the remarkable designs of Persian ceramic decoration.

Embroidered width: 100cm 39¼"  
 Pattern repeat: 57cm 22½"

All sizes are approximate and may vary slightly.  
 Available in bespoke sizes, colours and on any background fabric.  
 Please contact us for further assistance.

Scale 1:125

Illustration of a 1m drop of Boccaccio







Shown on Plain silk - Blue



Shown on Tafetta - Green

A dramatic, opulent Baroque design. This is a lavishly decorated fabric with illuminated filigree, richly hand embroidered in gold and silver threads.

Embroidered width: 100cm 39½"  
 Pattern repeat: 230cm 90½"

All sizes are approximate and may vary slightly. Available in bespoke sizes, colours and on any background fabric. Please contact us for further assistance.

Scale 1:125

Illustration of a 1m drop of Caligari





'LOVE IS A CANVAS FURNISHED  
BY NATURE AND EMBROIDERED  
BY IMAGINATION.'

Voltaire



Shown on Plain silk - Cameo



Shown on Lagan silk - Oyster

Capriccio - an opulent and spectacular design in an early 18th Century style. It is richly embellished with crystals and seed pearls giving a luxurious iridescent feel. It is both hugely romantic and wonderfully historic.

Embroidered width: 100cm 39¼"  
Pattern repeat: 71.2cm 28"

All sizes are approximate and may vary slightly. Available in bespoke sizes, colours and on any background fabric. Please contact us for further assistance.

Scale 1:125

Illustration of a 1m drop of Capriccio







Cathay cushion shown on Plain satin - Gold

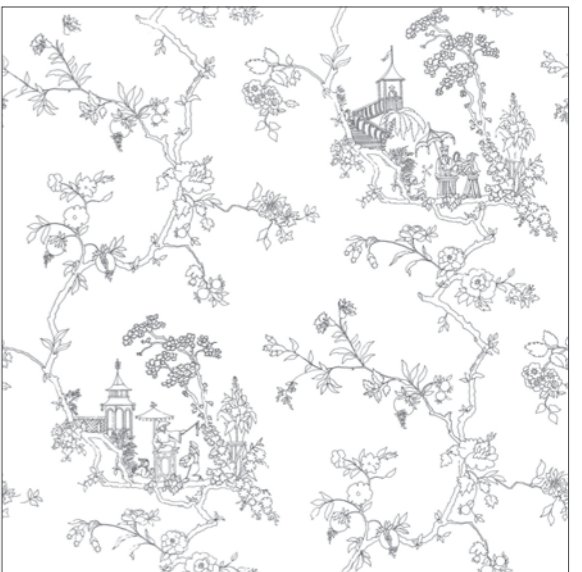
We have long loved the fanciful designs of 18th Century Chinoiserie - here we have interpreted an inventive landscape of pavilions, pagodas, parasols and princes each story stitched in brilliant silk threads. A delightful and loving interpretation of the West's love affair with Chinoiserie.

Embroidered width: 100cm 39¼"  
 Pattern repeat: 98cm 38½"

All sizes are approximate and may vary slightly. Available in bespoke sizes, colours and on any background fabric. Please contact us for further assistance.

Scale 1:125

Illustration of a 1m drop of Cathay



Shown on Pieris linen - Ecru





Shown on Capri silk velvet - Pistachio with Sandro sheer and Claudia tie back



Claudia tie back shown on Capri silk velvet - Pistachio

We have played with an 18th Century architectural stone work design and inter layered it with delicate, purposely placed leaves and scrolls hand sewn in regal gold thread. An elegant and inventive design.

Embroidered width: 30cm 11¾"  
 Pattern repeat: 69cm 27¼"

All sizes are approximate and may vary slightly. Available in bespoke sizes, colours and on any background fabric. Please contact us for further assistance.

Scale 1:125

Illustration of a 1m drop of Cellini





'I ALWAYS PUT IN ONE CONTROVERSIAL  
ITEM. IT MAKES PEOPLE TALK'

Dorothy Draper

Shown on Corno silk velvet - Pompeian red



Pavilion dining chairs in Lagan silk - Oyster with Cellini embroidery



'I'M DRAWN TO FURNITURE DESIGN AS COMPLETE ARCHITECTURE BUT ON A MINOR SCALE.'

Brad Pitt



Shown on Eriskay wool - Sand



Kingsley dining chair with Circe embroidery

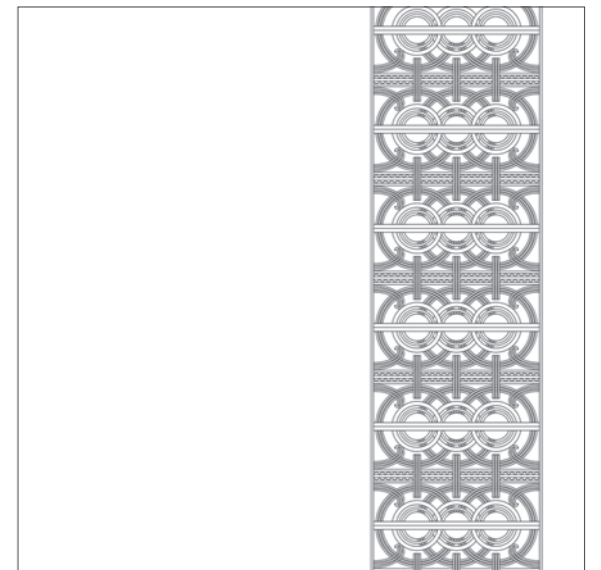
Circe is a beautiful stylised design comprising of a pattern of concentric circles and bold regimented lines - perfectly capturing the spirit of Art Deco. This exquisite fabric is enriched by extraordinary hand sewn beadwork that creates a design that is truly unique and luxurious.

|                    |        |      |
|--------------------|--------|------|
| Embroidered width: | 29cm   | 11½" |
| Pattern repeat:    | 16.5cm | 6½"  |

All sizes are approximate and may vary slightly. Available in bespoke sizes, colours and on any background fabric. Please contact us for further assistance.

Scale 1:125

Illustration of a 1m drop of Circe





'FAST IS FINE,  
BUT ACCURACY  
IS EVERYTHING'  
Xenophon



Shown on Lagan silk - Oyster with Capri - Sable applique



Cordoba cushion shown on Lagan silk - Aqua

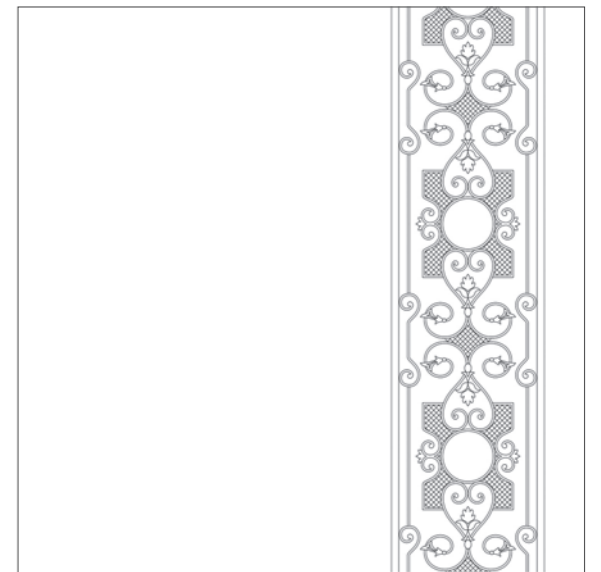
Cordoba is an eye catching leading edge border design inspired by Classical Greek architecture. Its sharp geometric lines and fine sculptural scroll like decorations creates a bold yet beautiful classic design.

Embroidered width: 27cm 10¾"  
Pattern repeat: 41cm 16¼"

All sizes are approximate and may vary slightly.  
Available in bespoke sizes, colours and on any background fabric.  
Please contact us for further assistance.

Scale 1:125

Illustration of a 1m drop of Cordoba







Shown on Awbeig silk - Putty



Shown on Plain silk - Sage green

Darius is inspired by the rich and complex tapestries of the Ottoman Empire. Characterised by large-scale peony and fern like motifs highlighted with shimmering threads - the overall effect creates a lattice like pattern.

Embroidered width: 30cm 11¾"  
 Pattern repeat: 25.5cm 10"

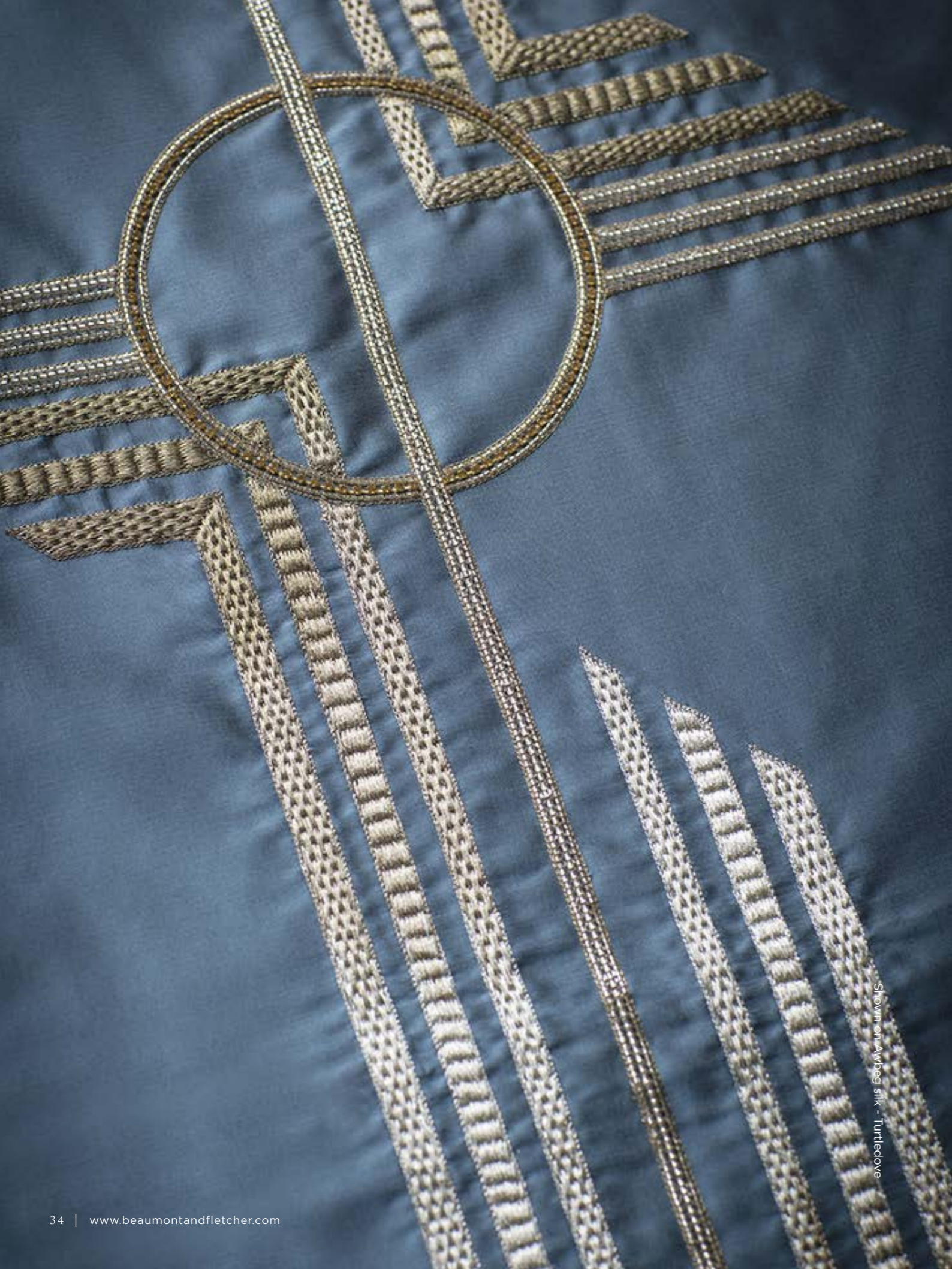
All sizes are approximate and may vary slightly. Available in bespoke sizes, colours and on any background fabric. Please contact us for further assistance.

Scale 1:125

Illustration of a 1m drop of Darius







Shown on Awbeg silk - Turtledove



Earhart cushion shown on Capri silk velvet - Charcoal

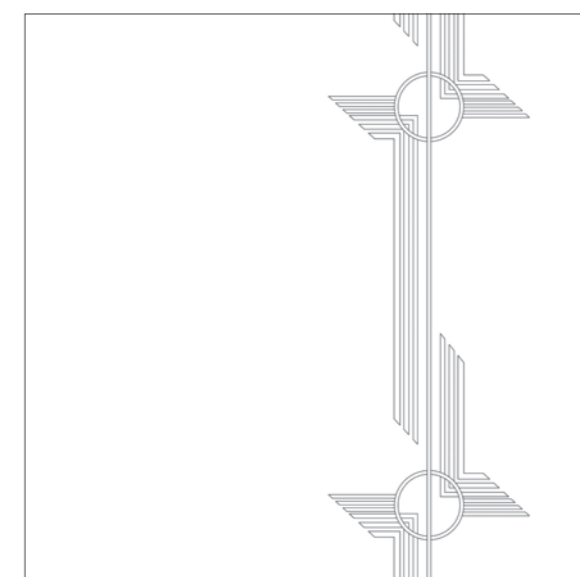
Earhart personifies the glamour and sophistication of the Art Deco period. The impeccably crafted geometric shapes and lines embroidered in metallic thread capture a design of elegance and luxury.

Embroidered width: 34.5cm 13½"  
 Pattern repeat: 67cm 26½"

All sizes are approximate and may vary slightly. Available in bespoke sizes, colours and on any background fabric. Please contact us for further assistance.

Scale 1:125

Illustration of a 1m drop of Earhart







Elektra 'Gold' Leading edge  
shown on Eriskay wool - Cloud



Elektra 'Silver' shown on Indian dupion - Black

Geometric, dramatic and sharply defined. The hand sewn beadwork on the Elektra gives a highly effective linear pattern with an Art Deco influence.

Embroidered width: 100cm 39¼"  
Pattern repeat: 24cm 9½"

All sizes are approximate and may vary slightly. Available in bespoke sizes, colours and on any background fabric. Please contact us for further assistance.

Scale 1:125

Illustration of a 1m drop of Elektra







Shown on Duchess satin - Storm



Shown on Duchess satin - Storm

An undulating floral bouquet of leaves and flowers is delicately embroidered in antiqued metal threads. An enchanting and rich fabric.

Embroidered width: 100cm 39¼"  
 Pattern repeat: 33.5cm 13¼"

All sizes are approximate and may vary slightly. Available in bespoke sizes, colours and on any background fabric. Please contact us for further assistance.

Scale 1:125

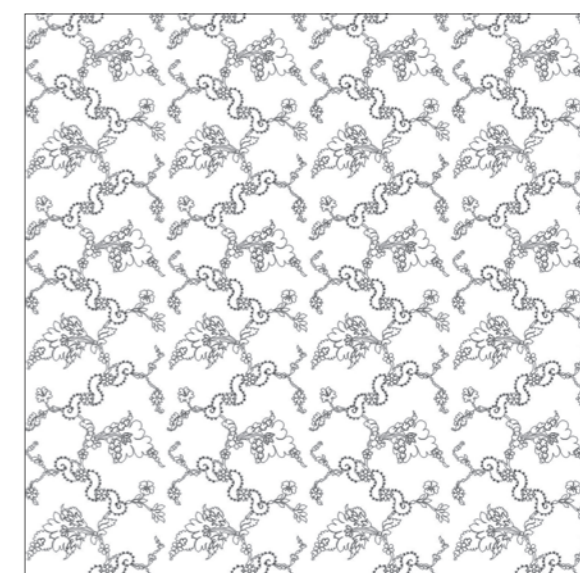


Illustration of a 1m drop of Fidelio



‘YOU WILL BEGIN TO WONDER THAT HUMAN DARING EVER ACHIEVED ANYTHING SO MAGNIFICENT.’

John Ruskin, Mornings in Florence



Shown on Regal silk - Autumn light



Shown on Eriskay wool - Cloud

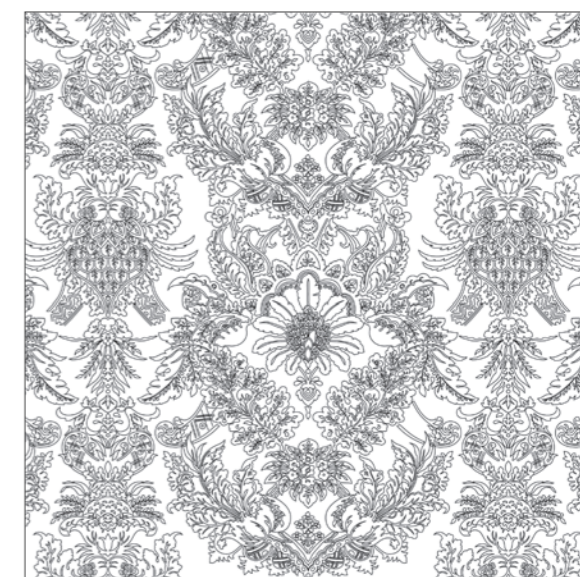
Florence is a richly worked damask full of drama and opulence - the elaborately worked patterns and textures are inspired by Italian Baroque, a period intent on impressing! This lavishly decorated fabric with metallic thread, seed pearls and beads is a beautiful work of art that will enrich any home.

Embroidered width: 137cm 54"  
 Pattern repeat: 62cm 24½"

All sizes are approximate and may vary slightly. Available in bespoke sizes, colours and on any background fabric. Please contact us for further assistance.

Scale 1:125

Illustration of a 1m drop of Florence







Shown on Lagan silk - Oyster

Fontainebleau is an exceptional design, romantic and effervescent, a fabric entirely worthy of its courtly title. The crystals and fresh water pearls are hand stitched in exquisite detail giving an almost painterly quality to the design.

|                    |       |      |
|--------------------|-------|------|
| Embroidered width: | 118cm | 46½" |
| Pattern repeat:    | 93cm  | 36½" |

All sizes are approximate and may vary slightly. Available in bespoke sizes, colours and on any background fabric. Please contact us for further assistance.

Scale 1:125

Illustration of a 1m drop of Fontainebleau







Bianca tie back shown on Como silk velvet - Teal

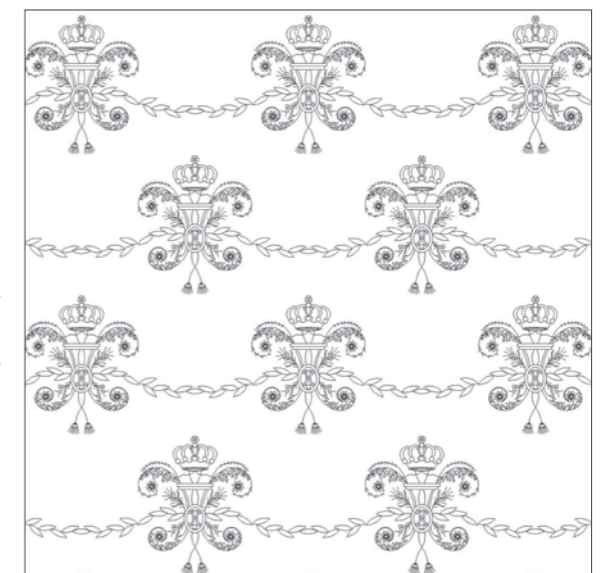
A repeat pattern of a regal design with intricate scrolls, tassels and a delicate crown, looped together by a fine garland of laurel leaves. A highly decorative fabric working with antique silver, crystals and pearls.

Embroidered width: 100cm 39¼"  
 Pattern repeat: 49.3cm 19½"

All sizes are approximate and may vary slightly.  
 Available in bespoke sizes, colours and on any background fabric.  
 Please contact us for further assistance.

Scale 1:125

Illustration of a 1m drop of Imperatore







Imperatore Silver' shown on Como silk velvet - Fern



Imperatore Gold' shown on Como silk velvet - Pompeian red



'BEAUTY MADE YOU LOVE,  
AND LOVE MADE YOU BEAUTIFUL.'

Elizabeth von Arnim, *The Enchanted April*



Shown on Isolde 'Silver' on Plain satin - Black



Calypso chair with Isolde 'Gold' embroidery

Isolde is an enchanting design made up of delicate posies of wild flowers scattered across the fabric. Each flower holds an uncut semi-precious stone in its centre and each petal is skilfully and finely worked in metal thread giving the flowers a lustre and rich texture as they catches the light.

|                    |         |      |
|--------------------|---------|------|
| Embroidered width: | 120cm   | 47¼" |
| Pattern repeat:    | 115.5cm | 45½" |

All sizes are approximate and may vary slightly. Available in bespoke sizes, colours and on any background fabric. Please contact us for further assistance.

Scale 1:125



Illustration of a 1m drop of Isolde



'I HAVE THE SIMPLEST TASTES.  
I AM ALWAYS SATISFIED WITH THE BEST.'  
Oscar Wilde



Shown on Erne silk - Platinum



Shown on Boyne silk - Caspian

An exquisitely embellished peacock sits amongst golden scrolling threads - his dramatic plumage cascading down with each intricate feather hand worked creating movement and drama. It is a wonderfully vivid fabric making a statement in any interior. Juno can be adapted for panels of different sizes and proportions.

Embroidered width: 126cm 49½"  
Pattern repeat: 249cm 98"

All sizes are approximate and may vary slightly. Available in bespoke sizes, colours and on any background fabric. Please contact us for further assistance.

Illustration of a Juno panel 249 x 126cm







Shown on Erme silk - Platinum



Calypso chair with Juno embroidery on Foyle silk - Dijon



'THERE IS A FALLEN  
 SPLENDID TEAR FROM THE  
 PASSION FLOWER AT THE  
 GATE. SHE IS COMING MY  
 DOVE MY DEAR. SHE IS  
 COMING, MY LIFE MY FATE'  
 Elizabeth von Arnim, The Enchanted April



Shown on Eriskay wool - Cloud



Shown on Boyne silk - Spindleberry

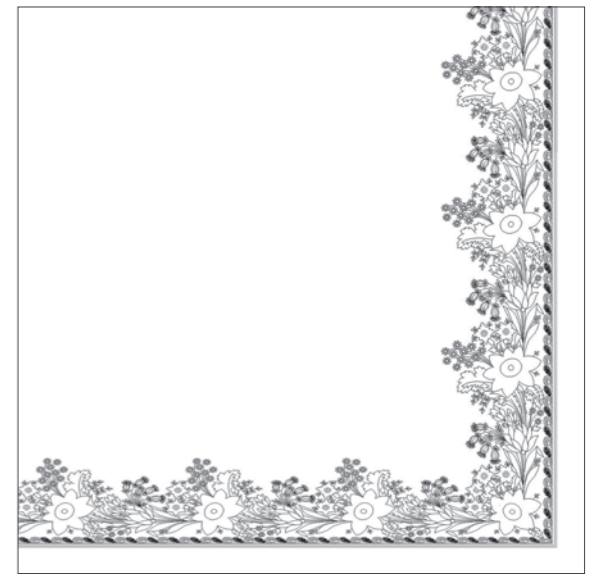
Matilda is a pretty 18th Century inspired design of climbing sprays of passion flowers, seedpods and leaves, a leading edge embroidery using delicate crystals and beads that cascade across the fabric reminiscent of a wildflower meadow.

Embroidered width: 20cm 7¾"  
 Pattern repeat: 25.5cm 10"

All sizes are approximate and may vary slightly.  
 Available in bespoke sizes, colours and on any background fabric.  
 Please contact us for further assistance.

Scale 1:125

Illustration of a 1m drop of Matilda







Moliere shown on Eriskay wool - Cloud



Moliere cushion shown on Eriskay wool - Cloud

Moliere is a dainty ornate tracery of intertwining leaves and flowers, hand embroidered in silver and antique thread - seemingly scattered across the fabric giving an elegant and feminine feel.

Embroidered width: 133cm 52 1/4"  
Pattern repeat: 77cm 30 1/4"

All sizes are approximate and may vary slightly. Available in bespoke sizes, colours and on any background fabric. Please contact us for further assistance.

Scale 1:125



Illustration of a 1m drop of Moliere



'EVERYTHING IN LIFE THAT'S ANY FUN, AS SOMEBODY WISELY OBSERVED IS EITHER IMMORAL, ILLEGAL OR FATTENING'

PG Woodhouse



Shown on Lagan silk - Oyster with Capri - Sable applique



Shown on Awbeg silk - Turtle dove with Capri - Almond applique

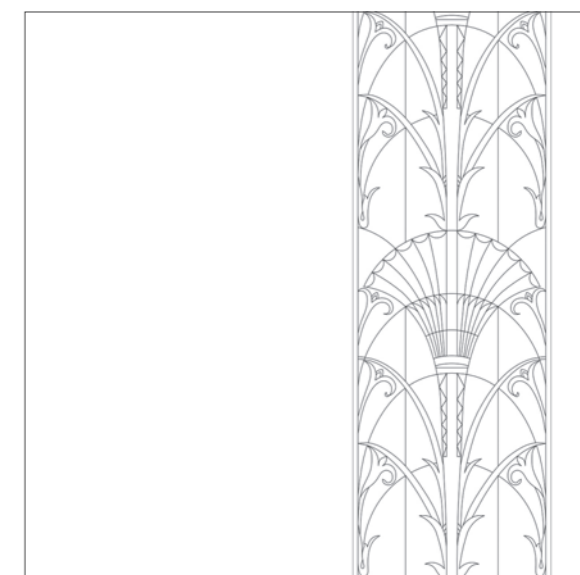
Montano evokes the bold and decorative modernism of the Twenties. The elegant framed panel comprises a fan (a very popular decorative motif of the era) and geometric shapes, applied in velvet and contrasting silks.

Embroidered width: 34.5cm 13½"  
 Pattern repeat: 60cm 23½"

All sizes are approximate and may vary slightly. Available in bespoke sizes, colours and on any background fabric. Please contact us for further assistance.

Scale 1:125

Illustration of a 1m drop of Montano







Octavia 'Cornflower' shown on Plain silk - Alabaster



Octavia 'Rose' shown on Plain silk - Alabaster

Circular garlands tumble across the leading edge with wild flower posies strewn across the fabric. A thoroughly 18th Century English inspired silk with the gentle colours and curvy lines evocative of the Rococo period.

Embroidered width: 30.5cm 12"  
 Pattern repeat: 38cm 15"

All sizes are approximate and may vary slightly. Available in bespoke sizes, colours and on any background fabric. Please contact us for further assistance.

Scale 1:125

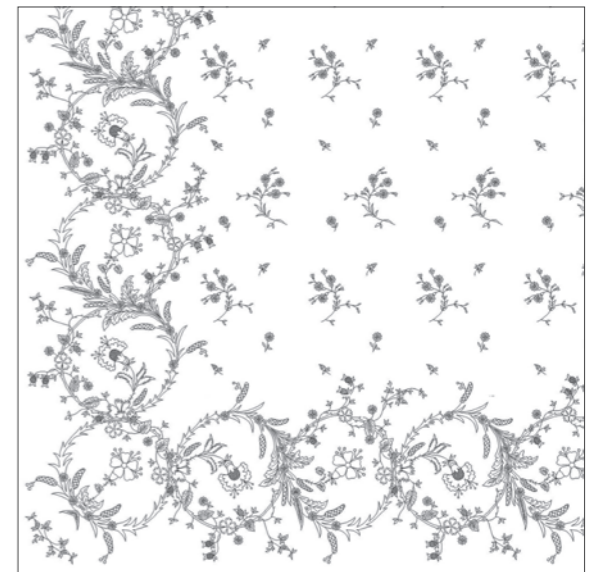


Illustration of a 1m drop of Octavia



'THERE WAS A TIME WHEN MEADOW,  
GROVE AND STREAM, THE EARTH AND  
EVERY COMMON SIGHT TO ME DID SEEM  
APPARELLED IN CELESTIAL LIGHT THE  
GLORY AND THE FRESHNESS OF A DREAM.'

William Wordsworth



Shown on Oona wool - Lace



Shown on Eriskay wool - Cloud

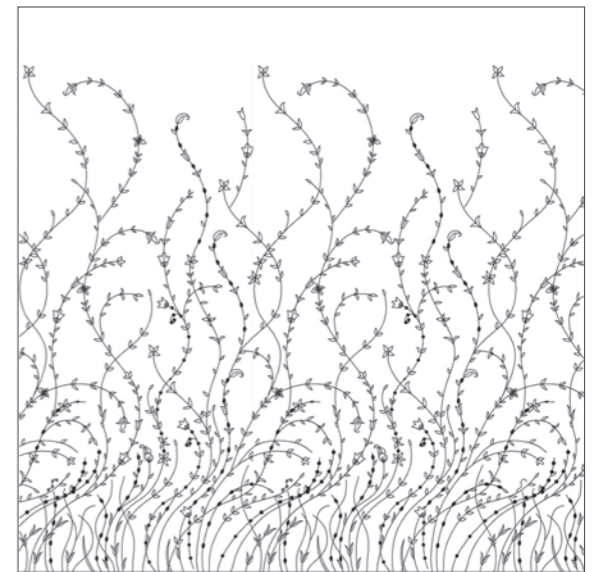
Oscar is an elegant leading edge pattern depicting gently swaying grasses that intertwine. It creates a pattern that is both delicate and ethereal in nature. Hand embroidered with antique gold thread and embellished with tiny pearls and beads.

Embroidered width: 90cm 35½"  
Pattern repeat: 41.5cm 16¼"

All sizes are approximate and may vary slightly. Available in bespoke sizes, colours and on any background fabric. Please contact us for further assistance.

Scale 1:125

Illustration of a 1m drop of Oscar







Shown on Antique suede - Grey



Ottoman table with Otello on Antique suede - Grey

Taking our influence from the strong and decorative characteristics of Moorish architecture we created Otello. A uniform trellis pattern, using a 'chain mail' technique in thick antiqued metallic threads.

|                    |       |      |
|--------------------|-------|------|
| Embroidered width: | 100cm | 39¼" |
| Pattern repeat:    | 10cm  | 4"   |

All sizes are approximate and may vary slightly. Available in bespoke sizes, colours and on any background fabric. Please contact us for further assistance.

Scale 1:125

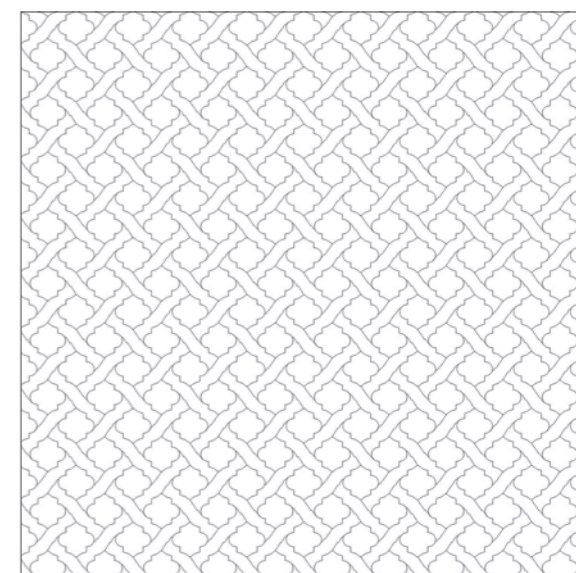


Illustration of a 1m drop of Otello





Shown on Plain satin - Willow



Shown on Plain cotton - Blue

Pamina is a wistful, graceful design. Oriental inspired foliage is scattered across in a seemingly abandoned style yet yields an elegant feel with a timeless quality.

Embroidered width: 130cm 51¼"  
 Pattern repeat: 99.3cm 39"

All sizes are approximate and may vary slightly.  
 Available in bespoke sizes, colours and on any background fabric.  
 Please contact us for further assistance.

Scale 1:125



Illustration of a 1m drop of Pamina





Shown on Plain satin - Light sage



Papageno cushion shown on Foyle silk - Scottish isle

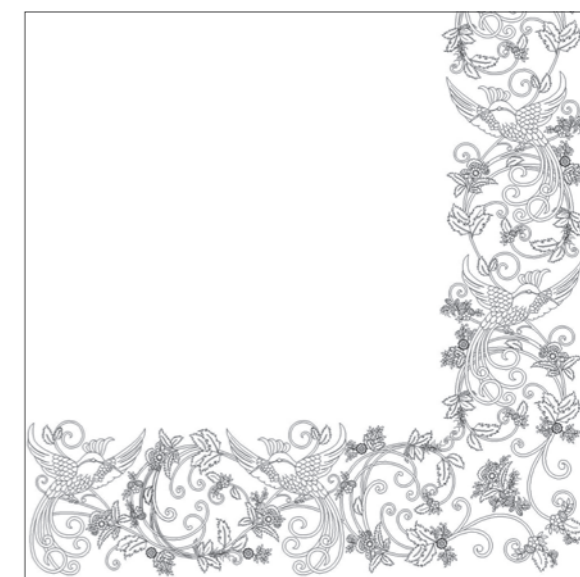
Papageno is a leading edge design with a mythical and fantastical birds of Paradise. Their ornate tail feathers loop around intricate flowers and foliage - its wings outstretched giving a sense of movement and flight. It is a fabric without compromise full of drama, beauty and artistry.

Embroidered width: 26.5cm 10½"  
 Pattern repeat: 63.5cm 25"

All sizes are approximate and may vary slightly. Available in bespoke sizes, colours and on any background fabric. Please contact us for further assistance.

Scale 1:125

Illustration of a 1m drop of Papageno





'I ALWAYS ADMIRERED VIRTUE,  
BUT I COULD NEVER IMITATE IT.'

Charles II



Shown on Como silk velvet - Teal



Shown on Capri silk velvet - Toledo red

Parsival is a Baroque design of grandeur and richness with large curves, scrolls and twists on its leading edge. A lively and handsome design that will give a theatrical statement to a room.

Embroidered width: 30cm 11¾"  
Pattern repeat: 86.5cm 34"

All sizes are approximate and may vary slightly. Available in bespoke sizes, colours and on any background fabric. Please contact us for further assistance.

Scale 1:125

Illustration of a 1m drop of Parsival





'IF I HAD TO CHOOSE  
BETWEEN CLOTHES  
AND FURNITURE,  
I'D CHOOSE FURNITURE.'

Julianne Moore



Shown on Eriskay wool - Shell



Piet cushion shown on Erne silk - Silver birch

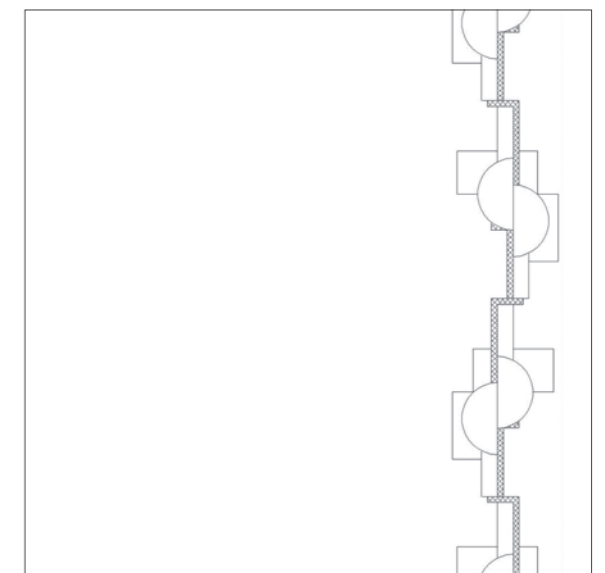
Piet is a stunning abstract pattern made up of angular lines, rectangles and semicircles. Inspired by the Art Deco era of the 1920s. The pattern can run down the leading edge of curtains or adorn cushions or chair backs.

Embroidered width: 19.5cm 7¾"  
Pattern repeat: 68cm 26¾"

All sizes are approximate and may vary slightly. Available in bespoke sizes, colours and on any background fabric. Please contact us for further assistance.

Scale 1:125

Illustration of a 1m drop of Piet







Edgar sofa in Capri - Emerald  
with Piet and Habibi cushions



'SIMPLICITY IS THE  
ULTIMATE SOPHISTICATION'  
Leonardo Da Vinci

Calyso dining chairs with Piet embroidery



'INSPIRATION IS AN AWAKENING, A QUICKENING OF ALL MAN'S FACULTIES, AND IT IS MANIFESTED IN ALL HIGH ARTISTIC ACHIEVEMENTS.'

Giacomo Puccini



Shown on Duchess satin - Golden



Shown on Foyle silk - Fishbone

Puccini is a formal Italianate design overflowing with ornamentation. It is beautiful example of the delicate embroidery and applique work in metal threads that create a supremely elegant design.

Embroidered width: 100cm 39½"  
 Pattern repeat: 120cm 47¼"

All sizes are approximate and may vary slightly. Available in bespoke sizes, colours and on any background fabric. Please contact us for further assistance.

Scale 1:125

Illustration of a 1m drop of Puccini







Shown on Capri silk velvet - Nankin



Shown on Capri silk velvet - Loganberry

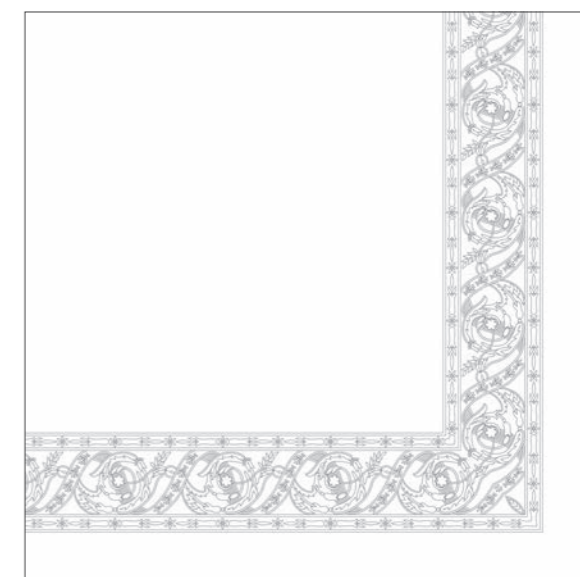
Racine is reminiscent of decorative textiles of the Tudor period. This richly embroidered design with scrolling bands, intricately embroidered in fine silver gilt needlework, will add an air of historic elegance to any room.

|                    |      |     |
|--------------------|------|-----|
| Embroidered width: | 17cm | 6¾" |
| Pattern repeat:    | 19cm | 7½" |

All sizes are approximate and may vary slightly. Available in bespoke sizes, colours and on any background fabric. Please contact us for further assistance.

Scale 1:125

Illustration of a 1m drop of Racine







Shown on Plain silk - Black

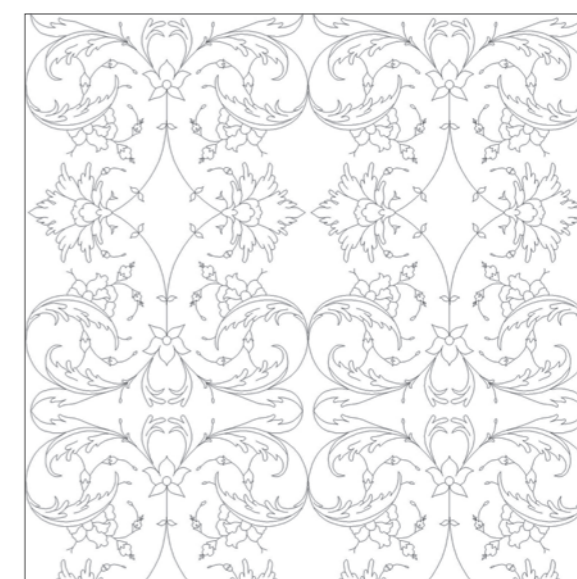
Rigoletto is an exciting swirling pattern of pearls and crystals, filled with movement and creating a wonderfully glamorous design.

|                    |           |      |
|--------------------|-----------|------|
| Embroidered width: | from 26cm | 10¾" |
| Pattern repeat:    | 70cm      | 27½" |

All sizes are approximate and may vary slightly. Available in bespoke sizes, colours and on any background fabric. Please contact us for further assistance.

Scale 1:125

Illustration of a 1m drop of Rigoletto



Rigoletto leading edge shown on Eriskay wool - Sand



'THE CITY SEEN FROM THE QUEENSBORO BRIDGE IS ALWAYS THE CITY SEEN FOR THE FIRST TIME, IN ITS FIRST WILD PROMISE OF ALL THE MYSTERY AND THE BEAUTY IN THE WORLD.'

The Great Gatsby - F.Scott Fitzgerald



Headboard with Rockefeller embroidery shown with Audrey curtains



Rockefeller cushion on Lagan silk - Oyster with Capri - Sable applique

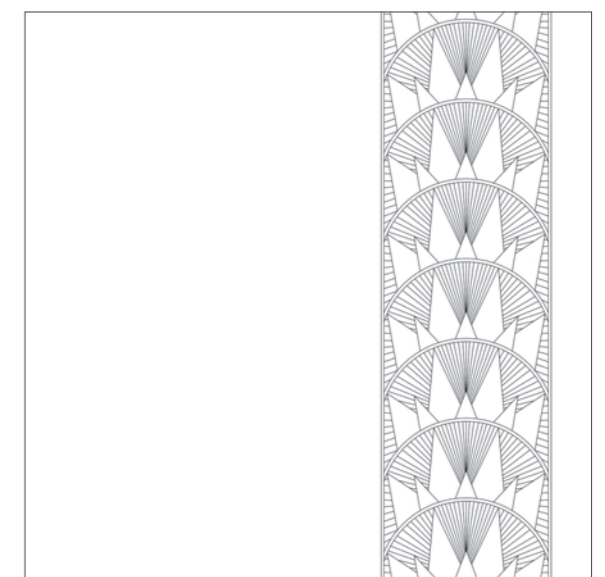
Inspired by the epitome of the New York skyline we translated the soaring confident arches of the Rockefeller Centre and created a stunning Art Deco border design embroidered in metallic threads, with contrasting applique fabric in silk or velvet.

Embroidered width: 30cm 11¾"  
 Pattern repeat: 14cm 5½"

All sizes are approximate and may vary slightly. Available in bespoke sizes, colours and on any background fabric. Please contact us for further assistance.

Scale 1:125

Illustration of a 1m drop of Rockefeller







Calypso chair with Rockefeller embroidery on Como silk velvet - Moss



Shown on Capri silk velvet - Charcoal  
with Lagan - Oyster applique





Shown on Regal tafeta - Burgundy



Shown on Awbeg silk - Iced coffee

Rondine is a flamboyant Rococo inspired fabric, with curved asymmetric scrolls and complex ornamentation in silk applique and antique gold wired.

|                    |       |      |
|--------------------|-------|------|
| Embroidered width: | 100cm | 39¼" |
| Pattern repeat:    | 115cm | 45¼" |

All sizes are approximate and may vary slightly. Available in bespoke sizes, colours and on any background fabric. Please contact us for further assistance.

Scale 1:125



Illustration of a 1m drop of Rondine



'IN VAIN HAVE I STRUGGLED? IT WILL NOT DO. MY FEELINGS WILL NOT BE REPRESSED. YOU MUST ALLOW ME TO TELL YOU HOW ARDENTLY I ADMIRE AND LOVE YOU.'

Mr Darcy, *Pride & Prejudice* - Jane Austen



Shown on Plain silk - Alabaster



Shown on Plain silk - Alabaster

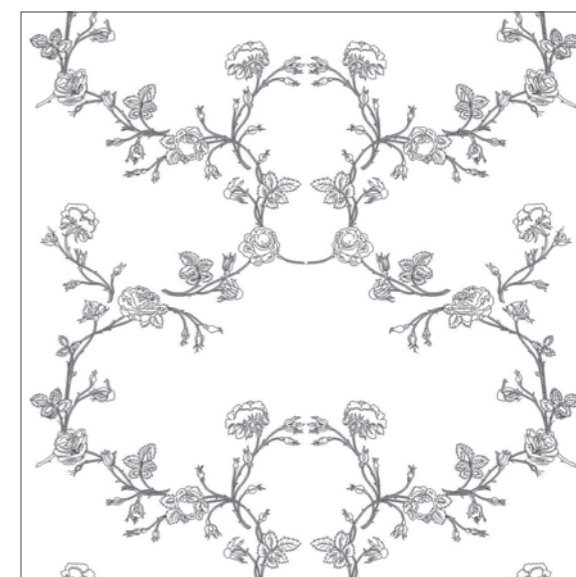
Rosewalk depicts a dainty English rose winding up an invisible trellis. The pattern is typical of the Georgian era, it creates an elegant, calming atmosphere to any room.

Embroidered width: 98cm 38½"  
 Pattern repeat: 64cm 25¼"

All sizes are approximate and may vary slightly. Available in bespoke sizes, colours and on any background fabric. Please contact us for further assistance.

Scale 1:125

Illustration of a 1m drop of Rosewalk







Shown on Capri silk velvet - Georgian green with Anastasia cushion



Rossini cushion shown on Capri silk velvet - Nankin

A wonderfully lavish and extravagant damask like design. Embellished in high relief antiqued silver and gold threads - a work of art and a fabric of immense drama that will bring both theatre and elegance to a room.

Embroidered width: 100cm 39¼"  
 Pattern repeat: 54cm 21¼"

All sizes are approximate and may vary slightly. Available in bespoke sizes, colours and on any background fabric.

Please contact us for further assistance.

Scale 1:125

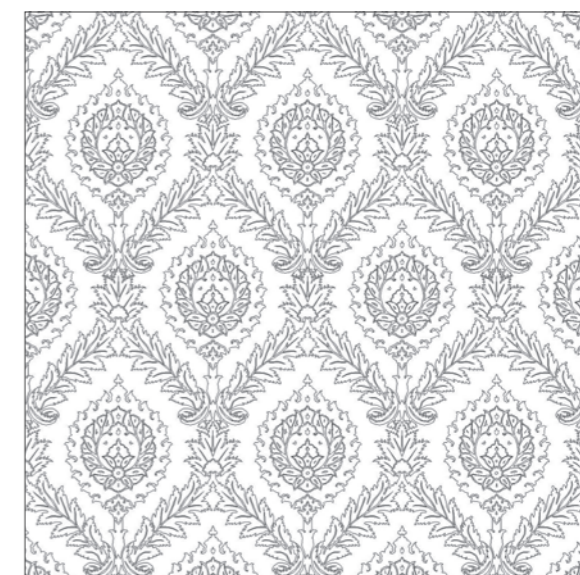


Illustration of a 1m drop of Rossini





Shown on Foyle silk - Carbon



'QUALITY IS NOT AN ACT,  
IT IS A HABIT'  
Aristotle

Cordelia tie back shown on Capri silk velvet - Loganberry





Shown on Viceroy dupion - Ribboorred



Shown on Como silk velvet - Teal

Salome is a dramatic, large scale design with a strong Ottoman influence, displaying a range of very fine embroidery techniques with intricate detail and texture.

Embroidered width: 100cm 39¼"  
 Pattern repeat: 100cm 39¼"

All sizes are approximate and may vary slightly. Available in bespoke sizes, colours and on any background fabric. Please contact us for further assistance.

Scale 1:125

Illustration of a 1m drop of Salome







Shown on Organza with Cellini curtain and Claudia tie back



Shown on Organza

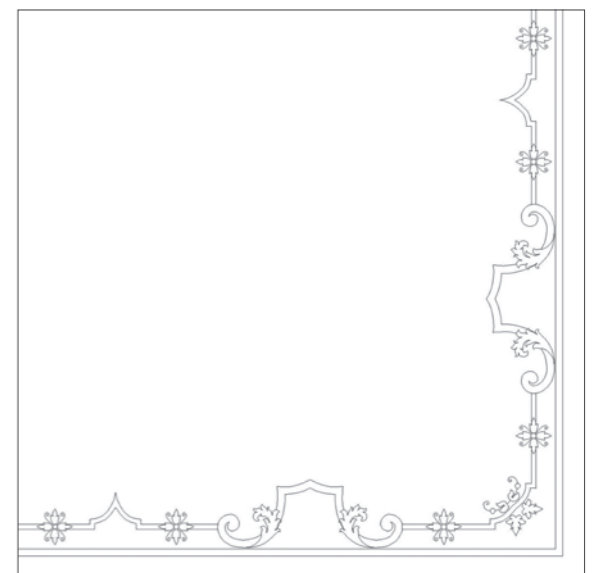
Sandro is an elegant leading edge border design, reminiscent of the scrolling lines found on the façade of Roman architecture. Small flowers and fig leaves finish off this elegant understated pattern.

Embroidered width: 13.5cm 5¼"  
 Pattern repeat: 69cm 27¼"

All sizes are approximate and may vary slightly.  
 Available in bespoke sizes, colours and on any background fabric.  
 Please contact us for further assistance.

Scale 1:125

Illustration of a 1m drop of Sandro





'ROOMS SHOULD BE TIMELESS'  
Sister Parish



Shown on Plain sat in - Light sage



Sevilla inspired panel on  
Eriskay wool - Sand

Sevilla is a distinctive design with a strong 1930's aesthetic. The subtle hand embroidered oval spirals are over-laid with highly characterised applied flowers and beaded leaves.

|                    |       |      |
|--------------------|-------|------|
| Embroidered width: | 110cm | 43¼" |
| Pattern repeat:    | 107cm | 42¼" |

All sizes are approximate and may vary slightly. Available in bespoke sizes, colours and on any background fabric. Please contact us for further assistance.

Scale 1:125



Illustration of a 1m drop of Sevilla





Shown on Organza

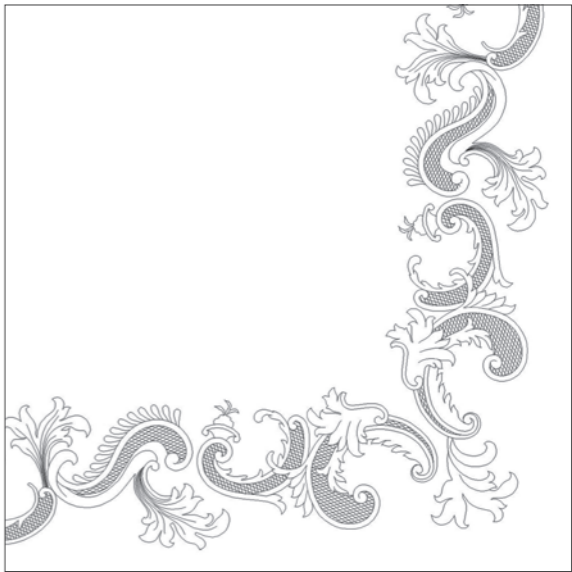
Silvia is a delicately embroidered leading edge pattern. It features plant-based scroll decorations taken from Greco-Roman architecture.

Embroidered width: 30cm 11¾"  
 Pattern repeat: 86.5cm 34"

All sizes are approximate and may vary slightly. Available in bespoke sizes, colours and on any background fabric. Please contact us for further assistance.

Scale 1:125

Illustration of a 1m drop of Silvia







Shown on Plain silk - Alabaster



Shown on Plain silk - Alabaster

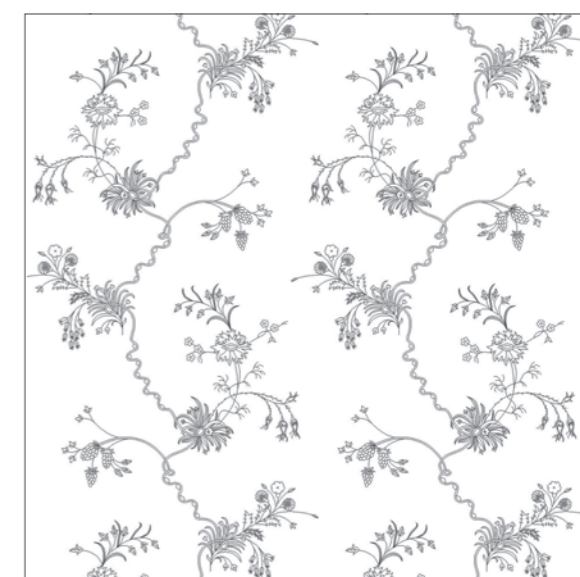
An elegant Georgian design inspired by the brocade silks fashionable in 1740s London. It consists of delicate cornflowers, rosehips and wild strawberries twisting together and climbing up the fabric.

|                    |      |      |
|--------------------|------|------|
| Embroidered width: | 99cm | 39"  |
| Pattern repeat:    | 82cm | 32¼" |

All sizes are approximate and may vary slightly. Available in bespoke sizes, colours and on any background fabric. Please contact us for further assistance.

Scale 1:125

Illustration of a 1m drop of Spitalfields







Shown on Organza



Shown on Plain silk - Blue

Tagore is an intricate design, with a strong French 18th Century influence that comprises an elegantly structured pattern of gemstones and metal embroidery.

Embroidered width: 118cm 46½"  
 Pattern repeat: 59.5cm 23½"

All sizes are approximate and may vary slightly. Available in bespoke sizes, colours and on any background fabric. Please contact us for further assistance.

Scale 1:125

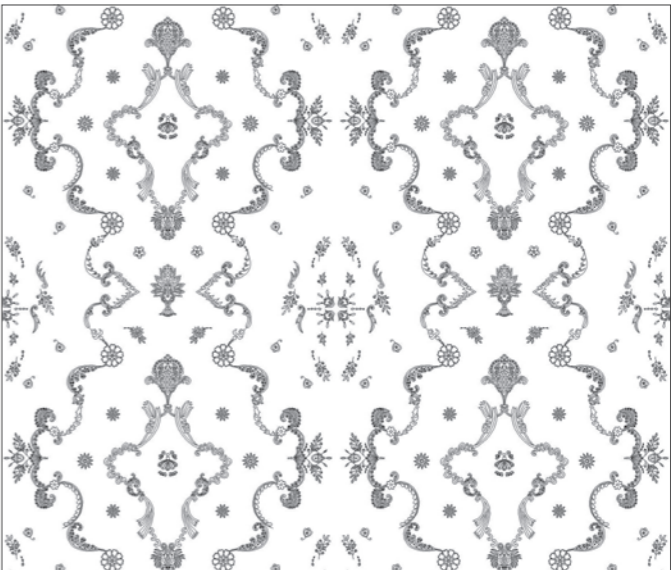


Illustration of a 1m drop of Tagore





Shown on Foyle silk - Sugarred almond



Calypso chair with Tamburlaine embroidery

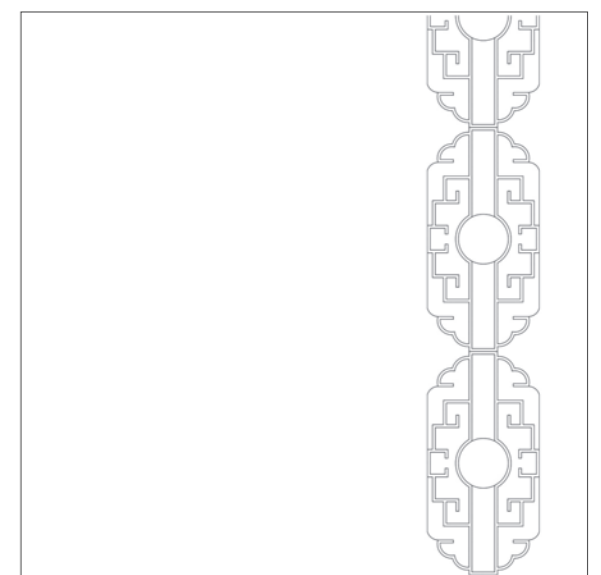
Named after the Marlow play about the Asian Emperor Timur. This is a majestic and lavish design which makes for a striking confident statement with an elegance that can only be achieved through the expression of hand embroidery.

Embroidered width: 20cm 7¾"  
 Pattern repeat: 40cm 15¾"

All sizes are approximate and may vary slightly. Available in bespoke sizes, colours and on any background fabric. Please contact us for further assistance.

Scale 1:125

Illustration of a 1m drop of Tamburlaine





'I KNOW A BANK WHEREON THE  
WILD THYME BLOWS, WHERE OXLIPS  
AND THE NODDING VIOLET GROWS.'

A Midsummer Night's Dream



Shown on Plain satin - Amulet



Shown on Organza

Small delicate floral posies rest between gently curving lace like ribbons adorned with fragile leaves. The hand embroidery and sequins give the fabric a beautiful light and romantic quality.

|                    |       |      |
|--------------------|-------|------|
| Embroidered width: | 130cm | 51¼" |
| Pattern repeat:    | 56cm  | 22"  |

All sizes are approximate and may vary slightly.  
Available in bespoke sizes, colours and on any background fabric.  
Please contact us for further assistance.

Scale 1:125



Illustration of a 1m drop of Tatiana



'IF YOU THINK A GOOD DESIGN IS EXPENSIVE, YOU SHOULD LOOK AT THE COST OF A BAD DESIGN.'

Ralf Speth



Shown on Boyne silk - Wassabi



Shown on Indian dupion - Black

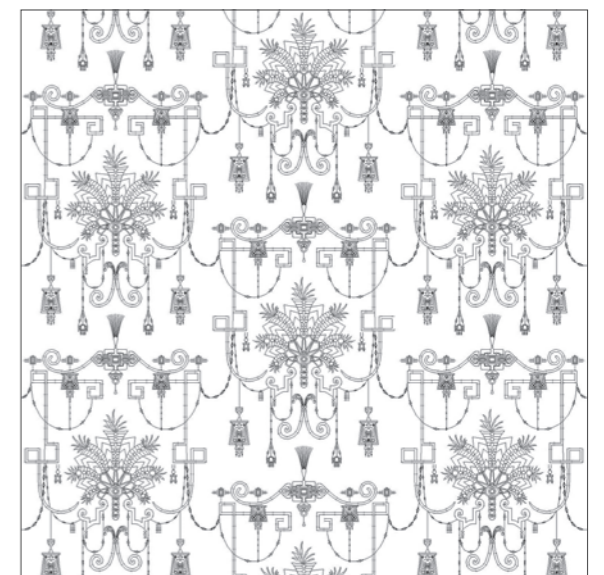
An intricate design in crystals and seed pearls, evoking the Egyptian revival style of the Art Deco era. Combining the stylised angularity of the period, with the sophisticated glamour of the fashion.

Embroidered width: 100cm 39¼"  
 Pattern repeat: 46cm 18"

All sizes are approximate and may vary slightly. Available in bespoke sizes, colours and on any background fabric. Please contact us for further assistance.

Scale 1:125

Illustration of a 1m drop of Tosca







Shown on Como silk velvet - Teal



Shown on Erne silk - Magnolia

Tuana is a golden iridescent design on a grand scale. A classical tree of life pattern as a leading edge, is laden with Persian inspired foliage and flowers rich and beautiful in texture made possible by a myriad of interwoven and interlocking gold threads.

|                    |      |      |
|--------------------|------|------|
| Embroidered width: | 30cm | 11¾" |
| Pattern repeat:    | 49cm | 19¼" |

All sizes are approximate and may vary slightly. Available in bespoke sizes, colours and on any background fabric. Please contact us for further assistance.

Scale 1:125

Illustration of a 1m drop of Tuana







Shown on Plain silk - Blue



Shown on Boyne silk - Golden

Turandot is a pretty design featuring delicate flower heads scattered amongst curving bands of foliage. Each flower is skilfully jewelled with small crystals and beads to create a highly delicate and elegant work of art.

|                    |       |      |
|--------------------|-------|------|
| Embroidered width: | 115cm | 45¼" |
| Pattern repeat:    | 36cm  | 14¼" |

All sizes are approximate and may vary slightly. Available in bespoke sizes, colours and on any background fabric. Please contact us for further assistance.

Scale 1:125

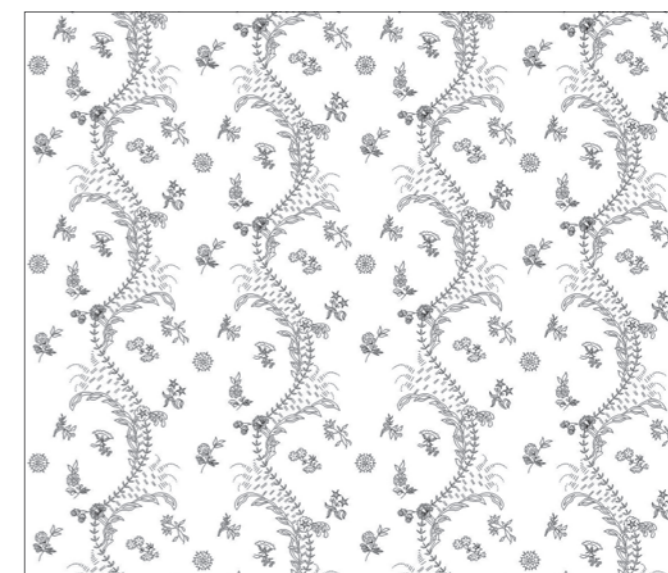


Illustration of a 1m drop of Turandot



'I AM GOING TO MAKE  
EVERYTHING AROUND ME BEAUTIFUL  
- THAT WILL BE MY LIFE.'

Elise de Wolfe



Shown on Duchess satin - Black



Shown on Duchess satin - Black

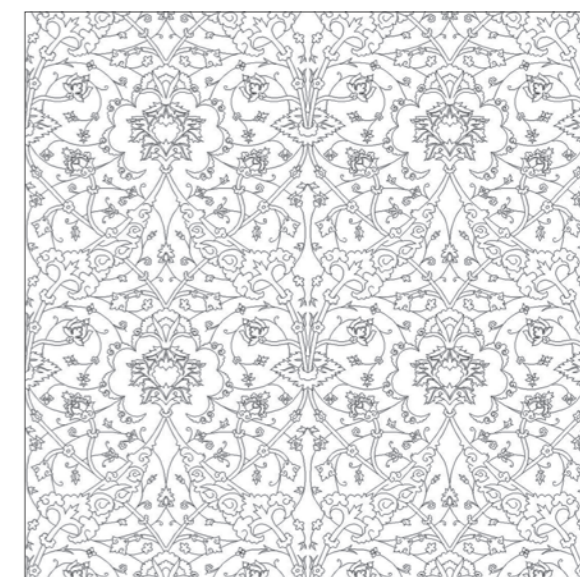
This rich detailed design is strongly influenced by complex patterns from 17th Century Ottoman tapestries. The large scale stylized motifs are highlighted using a variety of techniques and metallic threads.

Embroidered width: 100cm 39¼"  
Pattern repeat: 42cm 16½"

All sizes are approximate and may vary slightly. Available in bespoke sizes, colours and on any background fabric. Please contact us for further assistance.

Scale 1:125

Illustration of a 1m drop of Xerxes





'THE BEST ROOMS HAVE SOMETHING TO SAY ABOUT THE PEOPLE WHO LIVE IN THEM.'

David Hicks



Zarbo 'Gold' Leading edge shown on Capri silk velvet - Glacier



Zarbo 'Silver' shown on Empire tafetta - Black

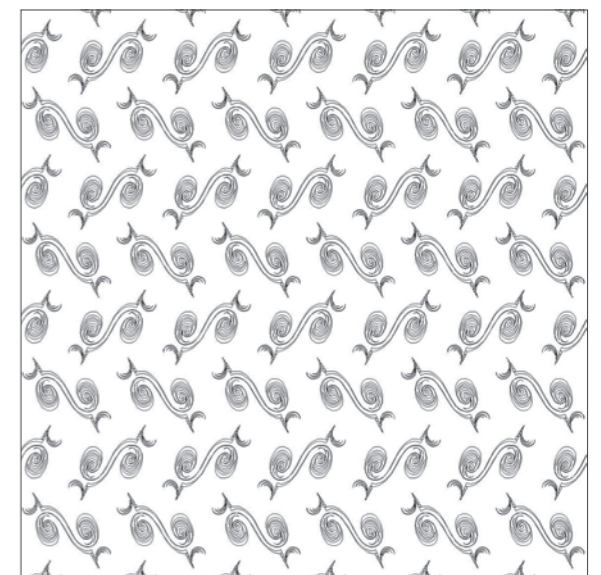
Zarbo is an Art Deco inspired design made up of elegant spirals. Its strong contemporary aspect achieved through fine hand sewn beadwork results in a dynamic and striking design.

Embroidered width: 100cm 39¼"  
 Pattern repeat: 22.5cm 8¾"

All sizes are approximate and may vary slightly. Available in bespoke sizes, colours and on any background fabric. Please contact us for further assistance.

Scale 1:125

Illustration of a 1m drop of Zarbo







Zola 'Gold' show on Eriskay wool - Cloud



Shown on Boyne silk - Mirabelle

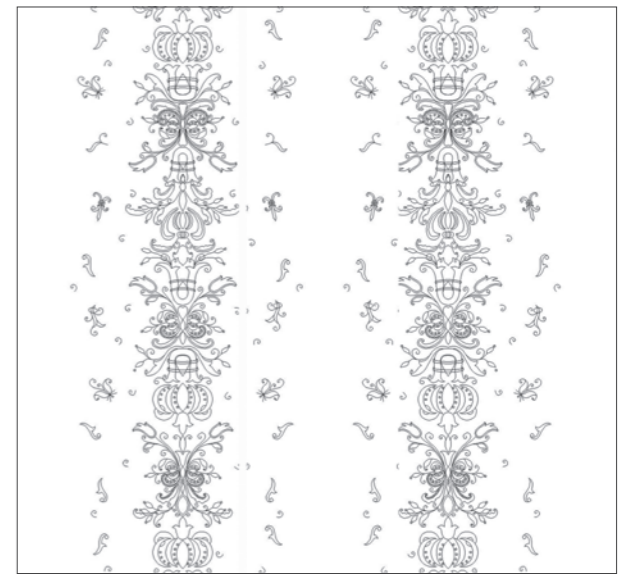
An elegant regal like pattern inspired by the Baroque period. Two intricate columns of highly decorative foliage and scrolls mirror each other, interrupted only by softly falling leaves and tiny scrolls dispersed either side. Zola can also be used as a leading edge pattern perfect for curtains and bedspreads.

Embroidered width: 106cm 41¾"  
 Pattern repeat: 89.5cm 35¼"

All sizes are approximate and may vary slightly. Available in bespoke sizes, colours and on any background fabric. Please contact us for further assistance.

Scale 1:125

Illustration of a 1m drop of Zola







Papageno curtain, Nicholas chair,  
Moliere cushion and Rococo mirror



BEAUMONT & FLETCHER  
INTERIOR ATELIER

---

## DESIGN PROCESS

Unlocking a design concept and turning it into the reality of a truly bespoke and often lavish piece of embroidery is a passion for us at Beaumont & Fletcher - be it with a fabric, cushion, panel or tie back - our commitment to ensuring that we deliver an exquisite embroidery to exacting standards is a skill we have mastered over the last thirty years.

Safeguarding this success, we work to a four stage process for every bespoke piece.

---





# 1

## CONCEPT

We will help you develop any initial concept, no matter how big or small. The starting point will be our own extensive archive - here at Beaumont & Fletcher we have collated over thirty years a vast library of beautiful samples and drawings.

But we are not a team that stands still, and when we are not researching and developing from our in-house documents - we are seeking out inspiration for new and bespoke designs in museum archives or antique shops.

# 2

## SAMPLING

Sampling is a critical stage of our bespoke embroidery.

We will meticulously choose materials, colours and techniques that complement each other and suit the pattern and the proportions. We will identify which type of stitch and bead work will bring the concept to life and give it that stunning three-dimensional quality.

Expectations are not only that they look exquisite and reflect the design perfectly but are also strong enough to fit their purpose.

# 3

## LAYOUTS

The final concept will be visualised in specially commissioned line drawings - where we have the opportunity to reveal the finished design before it's made into reality.

Unlike fabrics that come on a roll, we embroider our fabrics on panels of specific width and height, customised in size and scale to fit curtains, wall panelling or upholstery. With curtains, because we want the embroidery to look so effortlessly flawless we join the fabric - prior to the embroidery - then embroider over the seams.

We work directly with the curtain makers and upholsterer on the final layout to ensure precision of pattern placement.

# 4

## PRODUCTION

When all details are finalised and agreed on, we take the final stage from both paper and sampling to a three dimensional finished piece, making sure that every single stitch, bead and seam is flawless.

We can oversee making up the design onto the panel, curtain or tieback ensuring its standard of excellence and are delighted to be there for installation. When it's finally ready to be placed into the home it was created for - we can be there to guarantee perfection.

Every piece of bespoke design has its own story - a providence that makes it not just unique but truly spellbinding - and that is what we promise to deliver with every commission.





Bespoke peacock panel with Lydia chair





